

C [˘]						C						C [˘]										
C [˘] C [˘] Db	D [˘] D [˘] Eb	E [˘]	F [˘] F [˘] Gb	G [˘] G [˘] Ab	A [˘] A [˘] Eb	B [˘]	C [˘]	C [˘] C [˘] Db	D [˘] D [˘] Eb	E [˘]	F [˘] F [˘] Gb	G [˘] G [˘] Ab	A [˘] A [˘] Eb	B [˘]	C [˘]	C [˘] C [˘] Db	D [˘] D [˘] Eb	E [˘]	F [˘] F [˘] Gb	G [˘] G [˘] Ab	A [˘] A [˘] Eb	B [˘]

E D C D E F G
The first No-el

A B C[˘] B A G
the an-gel did say

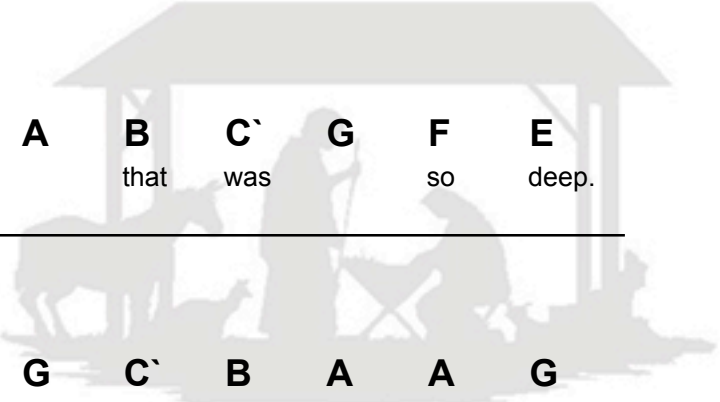
A B C[˘] B A G A B C[˘] G F E
was to cer-tain poor shep-herds in fields as they lay

E D C D E F G A
In fields where they lay

B C[˘] B A G
keep-ing their sheep

A B C[˘] B A G A B C[˘] G F E
on a cold win-ter's night that was so deep.

E D C D E F G C[˘] B A A G
No-el No-el No-el No-el



C ¹						C						C ²						
C ¹ C ¹ D ^b	D ¹ D ¹ E ^b	E ¹	F ¹ F ¹ G ^b	G ¹ G ¹ A ^b	A ¹ A ¹ B ^b	C ¹ C ¹ D ^b	D ¹ D ¹ E ^b	E ¹	F ¹ F ¹ G ^b	G ¹ G ¹ A ^b	A ¹ A ¹ B ^b	C ¹ C ¹ D ^b	D ¹ D ¹ E ^b	E ¹	F ¹ F ¹ G ^b	G ¹ G ¹ A ^b	A ¹ A ¹ B ^b	B ¹

C¹ **B** **A** **G** **A** **B** **C¹** **G** **F** **E**
 Born is the King of Is- re- el.

